

Edinburgh International
**Children's
Festival**
25 MAY – 2 JUNE 2019



Imagine

www.imagnate.org.uk

WELCOME



2019 is a very special year for the Edinburgh International Children's Festival.

We turn 30!

The Festival has grown and endured thanks to the incredible support of local audiences. Families return every year knowing the theatre and dance productions we present are formative encounters in young people's lives. The performances are diverse, challenging and enthralling. They encourage children to be critical thinkers with curious minds, whilst making them laugh, gasp or cry.

This year, you will again have a unique opportunity to see some of the best theatre and dance from across the globe. Take a voyage from a retro kitchen into outer space with a nod to the first female astronaut. Marvel at a truly invisible man. Or enter into the home of a miniaturist for an immersive and awe-inspiring magical journey. No need to pack anything – just bring your imagination along for the ride.

Come and celebrate this auspicious occasion with us this May as we present 15 productions from 8 different countries.

We can't wait to celebrate our 30th birthday with you!

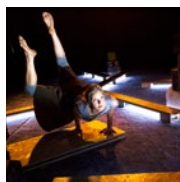
A handwritten signature in black ink, appearing to read 'Noel Jordan'. The signature is fluid and cursive, with a large, stylized 'N' and 'J'.

Noel Jordan
Festival Director

"I love this festival. The shows we saw were utterly brilliant. They brought us pure joy and uplifted our spirits."

Parent, Festival 2018

PROGRAMME AT A GLANCE



THREE LEGS
DENMARK

6

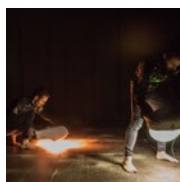
1.5-5 yrs



VALENTINA'S GALAXY
SCOTLAND

7

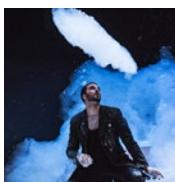
2-5 yrs



NERO
GERMANY

8

2-5 yrs



THE LITTLE BATH
FRANCE

9

2-6 yrs



MAPPAMONDO
THE NETHERLANDS

10

2-6 yrs



AND IF I WERE ME
FRANCE

11

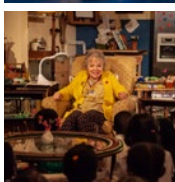
5-9 yrs



THE INVISIBLE MAN
THE NETHERLANDS

12

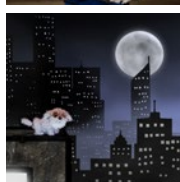
4-11 yrs



SMALL WONDERS
ENGLAND

13

5-11 yrs



NEW OWNER
AUSTRALIA

14

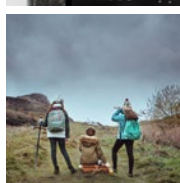
7-12 yrs



I WISH I WAS A MOUNTAIN
ENGLAND

15

7-12 yrs



THIS GIRL LAUGHS, THIS GIRL CRIES, THIS GIRL DOES NOTHING
SCOTLAND

16

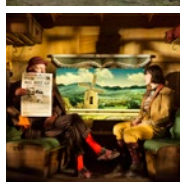
7-12 yrs



SUPER HUMAN HEROES
SCOTLAND

17

8-13 yrs



EMIL & THE DETECTIVES
AUSTRALIA

18

8-13 yrs



US/THEM
BELGIUM

19

10-15 yrs

FESTIVAL FAMILY DAY

at the National Museum of Scotland
Saturday 25 May



Ruth Armstrong



The Festival will open with a day of free pop-up performances and arts activities throughout the museum. An ideal way for families to spend a creative day out and discover some hidden gems!

Drop-in activities will include:

- ★ Live music
- ★ Walk-about performances
- ★ Hands-on arts activities
- ★ Storytelling
- ★ And the whole museum to explore...

For 2–5 year olds, don't miss *Valentina's Galaxy* (p.7) as part of the Festival, showing at Assembly Roxy, a 5-minute walk from the museum.



Ditte Valente

THREE LEGS

AABEN DANS
DENMARK

Age: 1.5–5 yrs

Duration: 35 minutes + playtime

Seating: Floor, benches and chairs

Non-verbal

We need all the support we can get when we enter life, and when our body's abilities fade out at the end. *Three Legs* is a humorous and touching performance about balance, holding and supporting each other. As an audience, we witness a journey through life and are reminded that we all need support. Filled with playful balancing games, dance movements and handstands, and accompanied by a gorgeous contemporary soundtrack, *Three Legs* enchants and captivates.

Venue: Southside Community Centre

Thu 30 May 13.30

Fri 31 May 10.30, 13.30

Sat 01 Jun 11.30, 14.00

Sun 02 Jun 11.30

A wonderful first experience for little ones – and particularly well suited for grandparents too!

“The performers infuse simple and recognisable movements with a myriad of associations and the many possibilities of play.”

teateravisen.dk

VALENTINA'S GALAXY

FROZEN CHARLOTTE

Presented by Imagine and Edinburgh International Science Festival

SCOTLAND

Age: 2-5 yrs

Duration: 45 minutes

Seating: Cushions and chairs

An intergalactic adventure for starry-eyed children.

Inspired by women in space including Valentina Tereshkova (first woman in space) and Mae Jemison (first African American woman in space), *Valentina's Galaxy* is a fascinating and moving experience and a real visual treat. Created by Katy Wilson and Heather Fulton, this immersive performance features a combustible concoction of experiments, rocket launches and star gazing. Frozen Charlotte, makers of *Paperbelle*, make a welcome return to the Festival.

Venue: Assembly Roxy

Sat 25 May 11.30, 14.00

Tue 28 May 10.00, 13.30

Wed 29 May 10.00, 13.30

Thu 30 May 10.00*, 13.30

Fri 31 May 10.00, 11.30

Sat 01 Jun 11.30, 14.00

** Relaxed performance aimed at audience members who would benefit from a more relaxed theatre environment, including people with an autistic spectrum, sensory or communication disorder.*

Originally commissioned by the Edinburgh International Science Festival, the production has undergone further development with support from the Science Festival, Imagine and the Scottish Government's Festivals Expo Fund.



Scottish Government
Riaghaltas na h-Alba
gov.scot

Supported through the
Scottish Government's Festivals Expo Fund

**"A living galaxy lovingly
created under a
canopy of stars."**

EdinburghGuide.com



NERO

ALFREDO ZINOLA & MAXWELL MCCARTHY

GERMANY

Age: 2-5 yrs

Duration: 35 minutes

Seating: Cushions

Non-verbal

Nero is a dance performance about darkness.

This unusual dark environment creates a space to dive into and let the imagination run free. With the two performers moving amongst the audience and using their clothing as reflective surfaces, the walls transform into huge black canvasses and light dances across the room, creating a magical atmosphere.

Venue: North Edinburgh Arts

Mon 27 May 09.45, 11.45, 13.45

Tue 28 May 09.45, 11.45, 13.45

Wed 29 May 09.45, 11.45

Nero continues Zinola and McCarthy's investigation into form and emotional content for early years audiences following the company's earlier production *Primo*. *Nero* is a journey, an experience to live and to discover; a chance for children and adults to consider the darkness from a new point of view.

“With much inventive genius and obvious movement skills, the performers conjure a night place on the stage, in which children's imagination can walk free.”

tanznetz.de

Sachia Jennis



“A world of clouds that comes alive on stage. More than a show, this is pure enchantment.”

Télérama Sortir



THE LITTLE BATH

THÉÂTRE DE ROMETTE
FRANCE

Age: 2–6 yrs
Duration: 30 minutes
Seating: Theatre seating

No babes in arms for this show

It’s the story of a man who takes a bath. Actually, it’s a dancer sculpting clouds. Or is it a cloud cradling a dancer in its arms? Or maybe it’s something else entirely...

Created for very young audiences, *The Little Bath* is a show full of white foam; a lot

Venue: The Studio
Sat 01 Jun 11.00, 13.30, 15.30
Sun 02 Jun 10.30, 12.30, 14.30

of foam, smooth and floating, malleable and fragile. Working with this fascinating material is a dancer who sculpts it, blows it and creates landscapes and ephemeral characters. A unique visual adventure full of bubbles of tenderness that will spark young children’s imagination.

To book: www.imagine.org.uk | 0131 228 1404



“A beautiful first theatre experience for the very young. Inventive and impulsive. Short but powerful. Playful and lively.”

PZC Walcheren

MAPPAMONDO

DADODANS AND GAIA GONNELLI
THE NETHERLANDS

Age: 2–6 yrs

Duration: 35 minutes + playtime

Seating: Theatre seating

Non-verbal

An imaginary journey across the Earth with music and dance.

Using sand, earth, stones and a playful installation of percussion instruments, a dancer and a percussionist create a world of colours and sounds. Dancing to fragments

Venue: Southside Community Centre

Mon 27 May 10.30, 13.15

Tue 28 May 10.30, 13.15

Wed 29 May 10.30, 13.15

of music from different continents and to the sounds of nature, the performers take the audience on an adventure around the world to discover nature. The richness of the soil is revealed in the wide variety of colours, materials, smells and sounds used in the performance.

AND IF I WERE ME

ACT2 COMPANY CATHERINE DREYFUS
FRANCE

Age: 5–9 yrs

Duration: 40 minutes

Seating: Theatre seating

Non-verbal

What will I become?

In a giant transformable cube, three creature-dancers emerge, grow and unfold. They slither, squirm, jump and evolve, becoming unique beings, each with their own personalities. A humorous and breathtaking dance performance

Venue: The Studio

Mon 27 May 10.30, 13.30

Tue 28 May 10.30, 13.30

fizzing with energy, looking at change and metamorphosis. This whimsical and quirky dance production examines what makes each individual distinctively 'me'.

“A surprising performance, fresh and poetic. The choreography is quivering with joy.”

La Terrasse



THE INVISIBLE MAN

THEATER ARTEMIS
THE NETHERLANDS

Age: 4–11yrs

Duration: 60 minutes

Seating: Theatre seating

Two artists, a stage technician and a musician are waiting to start their show. Everything is in place, but where is the audience? Things are clearly unravelling. Who is playing the piano? Why is a coffee mug floating through the air? And who is that ghost sneaking off with the extension cord?

Venue: Traverse Theatre

Thu 30 May 19.00

Fri 31 May 10.00, 13.30

Sat 01 Jun 15.00, 19.00

Sun 02 Jun 11.30, 15.00

Mixing ingenious tricks and anarchic theatre, this unpredictable and unruly show explores the border between fiction and non-fiction. Theater Artemis, widely applauded for creating wonderfully absurd theatre for young audiences, return to the Festival with a show about everything you don't see and the joy of remaining unseen.

“A bravely staged fairytale about imagination and recognition.”

De Standaard



Kurt Van der Elst / Nimue Walraven

SPECIAL
3-WEEK RUN



“An atmospheric testament to the power of the imagination.”

London Evening Standard

SMALL WONDERS

PUNCHDRUNK
ENGLAND

Age: 5–11 yrs

Duration: 60 minutes

Seating: Promenade, floor and chairs

Haze and flashing lights. Children are offered a biscuit (wheat product).

Inside Nanny Lacey's flat is her collection of miniatures. These homemade creations capture the adventures she's shared with her daughter Bella over the years. Like 3D photographs, they're treasured moments of time and each one tells a different story.

As Nanny Lacey has gotten older she's started to forget things. Change is on the horizon and she'll soon move into a care home. Before she goes, there is one final miniature to share, and story to be told.

Funded through the PLACE Programme, a partnership between the Scottish Government – through Creative Scotland – the City of Edinburgh Council and the Edinburgh Festivals.

Venue: The Warehouse

Tue 14 May – Sun 02 Jun

Tuesdays 09.45, 11.30, 13.45, 16.30

Wednesdays 09.45, 11.30, 13.45, 19.00

Thursdays 09.45, 11.30, 13.45*, 16.30

Fridays 09.45, 11.30, 13.45, 19.00

Saturdays 11.30, 13.00, 15.30, 17.00, 19.00

Sundays 11.00, 13.00, 15.30

** Except Thurs 23 May at 13.30 – relaxed performance*

In this magical, immersive and interactive experience, Bella invites you to join Nanny Lacey in her flat and explore the tiny worlds she has created.

Punchdrunk (*Sleep No More*) has pioneered a game-changing form of theatre in which roaming audiences experience storytelling inside sensory theatrical worlds. Developing work for schools and communities alongside major productions around the globe, this will be their Scottish debut, presented over a special three-week season.

To book: www.imagine.org.uk | 0131 228 1404



NEW OWNER

THE LAST GREAT HUNT

AUSTRALIA

Age: 7–12 yrs

Duration: 50 minutes

Seating: Theatre seating

Non-verbal

Bart is a boisterous puppy waiting to be chosen from the animal shelter. Mabel is a lonely widow, trying to fill the hole in her heart. The day they find each other is the beginning of a profound friendship. But Mabel is old, and Bart is young – and suddenly alone. Combining puppetry, live action and animation, *New Owner* takes us on an adventure through a dog's eyes, sensitively exploring loss, friendship and new beginnings.

Venue: North Edinburgh Arts

Thu 30 May 13.30, 19.00

Fri 31 May 10.30, 13.30

Sat 01 Jun 11.00, 14.30

The multi-award winning makers of *The Adventures of Alvin Sputnik* return with a moving tale of loss and new hope.

“Watts and Gray’s storytelling art is deceptively simple but executed with considerable sophistication... *New Owner* sits perfectly in the timeless tradition of storytelling for children, and the child in all of us.”

The West Australian

I WISH I WAS A MOUNTAIN

THE EGG & TRAVELLING LIGHT THEATRE
ENGLAND

Age: 7–12 yrs

Duration: 45 minutes

Seating: Theatre seating

On the day of the famous annual fair, the town of Faldum receives an unexpected visit. A wanderer offers to grant a wish to anyone who wants one. Before long, the city is transformed. Mansions stand where mud huts once squatted, and beggars ride around in horse drawn carriages. And one man wishes to be turned into a mountain.

Written and performed by former Glastonbury Poetry Slam Champion Toby

Venue: Scottish Storytelling Centre

Tue 28 May 10.15, 13.15

Wed 29 May 13.15, 19.15*

Thu 30 May 10.15, 13.15

* BSL interpreted performance by Donna Williams

Thompson, *I Wish I was a Mountain* uses rhyme and live music to reimagine Herman Hesse's classic fairytale. With ingenious set design including plywood village houses, the show questions whether we really need the things we think we need.

Co-commissioned by Brighton Festival and Imagineate.



“Blending conversation, rap, and music, Toby’s engaging style takes everyone with him into the story”

Recorder

THIS GIRL LAUGHS, THIS GIRL CRIES, THIS GIRL DOES NOTHING

STELLAR QUINES

Commissioned by Imagine

SCOTLAND

Age: 7–12 yrs

Duration: 70 minutes

Seating: Theatre seating

What happens when your world is turned upside down and you have to find your own way? When triplet sisters are abandoned in a forest by their father, three resolutions are made – one walks one way to find purpose, another the opposite way to find adventure and the third stays right where she is. Over many years, having grown forests, baked cakes, explored oceans, fought Vikings and built homes... the sisters, now women, meet back in the forest where it all started. A contemporary fairytale about determination and friendship that will encourage us to follow our dreams.

 Scottish Government
Riaghaltas na h-Alba
gov.scot
Supported through the
Scottish Government's Festivals Expo Fund

Venue: Brunton Theatre

Tue 28 May 10.30, 13.30

Wed 29 May 10.30, 13.30

Thu 30 May 10.30, 13.30

Fri 31 May 10.30, 19.00

Sat 01 Jun 14.00*

* BSL interpreted performance by Amy Cheskin

Prolific playwright Finegan Kruckemeyer's play has been staged in many countries and languages and has been adapted into a book.

THE FESTIVAL ON TOUR

To book tickets, please contact each venue directly

11 May Macrobert, Stirling

13–14 May The Lemon Tree, Aberdeen

15 May The Byre Theatre, St Andrews

16 May Adam Smith, Kirkcaldy

17–18 May Tron Theatre, Glasgow

21 May Paisley Arts Centre

22 May SEALL, Isle of Skye

23 May Eden Court, Inverness

24–25 May Old Well Theatre, Moffat





Jassy Earl

SUPER HUMAN HEROES

THE LETTER J

Commissioned by Imagine in association with Paisley Arts Centre
SCOTLAND

Age: 8–13 yrs

Duration: 45 minutes

Seating: Theatre seating

All performances will be captioned

Captain Sunshine is not living up to his name! This Super Human Hero is not feeling super. Where's the all action superhero? Where's the run a hundred miles with a smile? We miss his sunshine, his light; we miss feeling that everything is going to be alright.

Captain Sunshine is overwhelmed by the challenges of the day. He's tired of being sunny – being good, funny, loving, smart – tired of playing the part. Who will save Captain Sunshine, if he cannot save himself? What does it mean to be a modern day Super Human Hero?

Venue: Traverse Theatre

Mon 27 May 19.30

Tue 28 May 10.30, 13.45

Wed 29 May 10.30, 13.45

Thu 30 May 10.30, 13.45

Fri 31 May 10.30

Sat 01 Jun 14.00, 19.15

A comical and musical dance with darkness, exploring the ways we are, fail and try to be super human heroes. There will be singing, there will be silence. We can't be heroes all the time. It's OK to be human.

THE FESTIVAL ON TOUR

To book tickets, please contact each venue directly

22 March Paisley Arts Centre

25 March Platform, Glasgow

27 March Eastwood Park Theatre, Giffnock

31 March The Byre Theatre, St Andrews

23 May Beacon Arts Centre, Greenock

25 May The Lemon Tree, Aberdeen

EMIL & THE DETECTIVES

SLINGSBY
AUSTRALIA

Age: 8–13 yrs

Duration: 70 minutes

Seating: Theatre seating

When young Emil catches a train to visit family in the big city, something valuable is stolen. But the thief soon discovers Emil was not such an easy target. A group of quick-thinking and resourceful children rallies around. Can a bunch of kids work together to uncover and outsmart the true criminal?

Adapted from Erich Kästner's novella by Nicki Bloom, this production breaks ground

Venue: Traverse Theatre

Mon 27 May 13.30, 19.15

Tue 28 May 10.00, 13.15

Wed 29 May 10.00, 13.15

for the independent-children-versus-devious-adults story genre. Streetwise city kids, a hard-working single mother and Emil's past brush with the law add grit and nuance to this satisfying tale.

In Slingsby's intimate theatrical style, Emil and The Detectives is told by two skilled actors immersed in smoke and mirrors, miniature worlds and a cinematic score. Expect dark and light, intrigue and delight.

"Emil and the Detectives delights, intrigues and astonishes its audience. An outstanding piece of theatre and an experience to be savoured by all."

InDaily





US/THEM

BRONKS & RICHARD JORDAN PRODUCTIONS
BELGIUM

Age: 10–15 yrs

Duration: 60 minutes

Seating: Theatre seating

In September 2004, 1,200 schoolchildren, their parents and teachers were held hostage by a group of armed terrorists in the small Russian town of Beslan. It lasted three days and ended in utter chaos.

Us/Them retells this story through the eyes of two (fictional) children. But it is not a straightforward account of this terrible tragedy. It's a theatre production about the entirely individual way children cope with extreme situations. With humour, a matter-of-fact approach and dynamic

Venue: The Studio

Wed 29 May 19.15

Thu 30 May 10.30, 13.30

Fri 31 May 10.30

physical storytelling, *Us/Them* strikingly shows that for children, things that seem incomprehensible in adults' eyes have their own logic.

“This remarkable piece of theatre is playful, surprisingly and painfully funny as well as moving. It makes you question the way such events are usually presented and the way myths are constructed.”

The Guardian

In association with Theatre Royal Plymouth, Big in Belgium and Summerhall

To book: www.imagine.org.uk | 0131 228 1404

PLAYFUL TIGER

BARROWLAND BALLET

SCOTLAND

Non-verbal dance theatre

Age: 7–17 yrs

A performance specially created for children with Autism Spectrum Condition (ASC) – available for special schools only.

Playful Tiger is a highly physical, interactive dance performance, specially created for children and young people who are profoundly autistic and mainly non-verbal.

A troubled family's world turns upside down when a mischievous tiger visits. It's chaotic, wild and brilliantly fun. Interacting directly with the audience *Playful Tiger* tells the story through the eyes of the child, with a focus on sensory engagement. Playfulness creates space for a two-way response between audience and performers.

For special schools only

Venue: Lyra at Artspace

Mon 27 May 09.45, 11.30, 13.30

Tue 28 May 09.45, 11.30, 13.30

Wed 29 May 13.30

“Remarkably bold and visionary... what really shines through is the generosity and constant awareness that the dancers show throughout the performance... taking participants into the accessible joy implicit in every facet of *Playful Tiger*.”

The Herald



Josy Earl



HELP INSPIRE A NEW GENERATION!

We believe that every child should have access to world-class theatre and dance regardless of their background and circumstance.

For the past 30 years, the Children's Festival has inspired generations of children with engaging and innovative shows from all over the world. As we celebrate our 30th anniversary, we want to raise £10,000 to spend over the next 5 years so that more children can access the Festival and benefit from this unique experience.

Please donate now to our Inspiring Futures appeal, and help make the Children's Festival more accessible than ever before.

- **£10** helps subsidise the cost of transport for 1 pupil to travel to the Festival from outside Edinburgh
- **£15** enables a child and their carer to watch a Festival performance for free
- **£30** contributes to the cost of a British Sign Language interpreter for d/Deaf audiences
- **£50** pays for visual storyboards for children with autism, helping them prepare for their visit to the theatre

There are 3 ways to donate:

- **With your ticket purchase:** When booking your tickets, you will have the option to add a donation. Please note that, unlike most festivals, we DO NOT charge a booking fee.
- **On Imagine's website:**
Visit www.imagine.org.uk/donate
- **By text:** Text **IMAGINATE10** to donate **£10** (change the number to **5** or **20** to give a different amount). Text to **70085** (standard network rate applies).

“It is so important for our pupils who do not generally get these kinds of opportunities, to be able to experience the excitement of a live theatre show.”

Teacher, Festival 2016



Kate Golllock

HOW TO BOOK

Online: imagine.org.uk

Telephone: 0131 228 1404

In person:

Traverse Theatre

10 Cambridge Street, Edinburgh EH1 2ED

Ticket prices

£9 per ticket as part of a family ticket
(*minimum 1 child, maximum 4 tickets*)

£9 per extra child

£12 per extra adult

£9 concession

Unlike many festivals, we do not charge booking fees to book online

Ticket collection

Tickets can be collected from the Traverse Theatre box office, picked up at the venue on the day from 30 minutes before the performance or posted to your address up to 10 days before the Festival. You will be charged an additional £1 for postage.

Traverse Box Office opening hours

Monday – Saturday 10:00–18:00 (or until last performance starts)

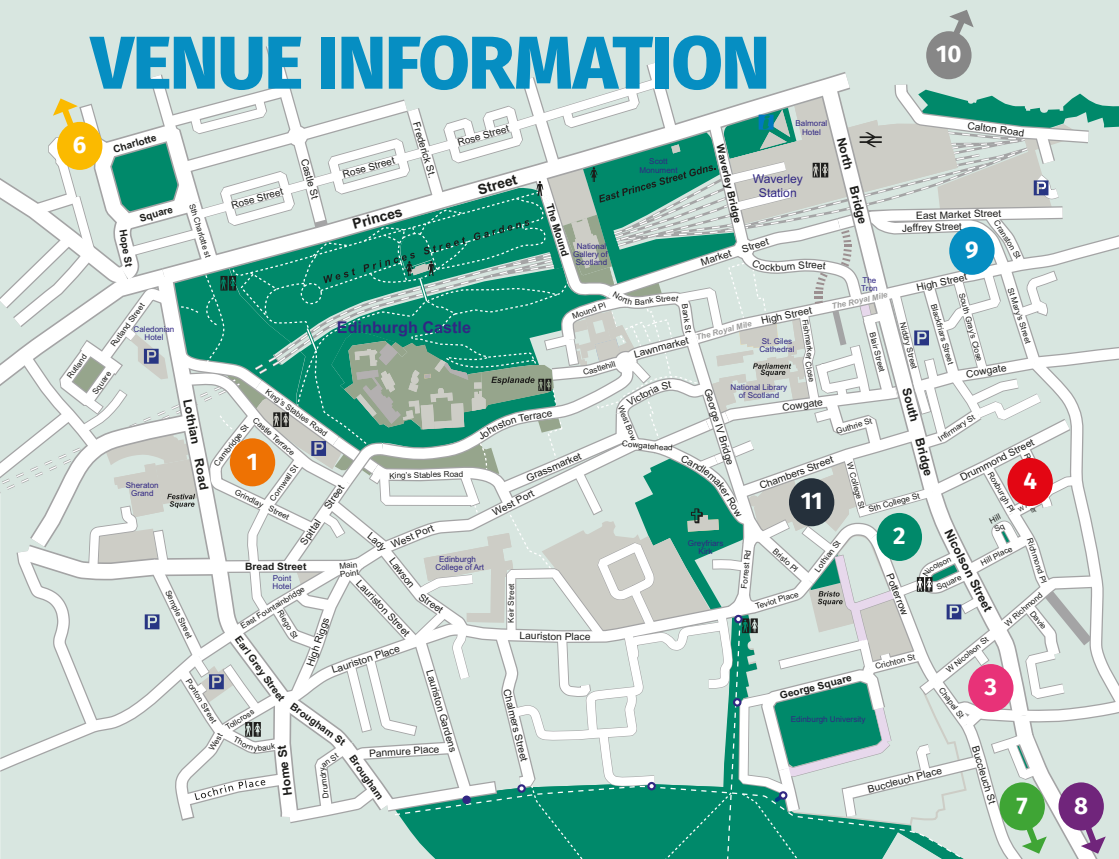
Accessibility

Imagine has a strong commitment to accessibility and equality. We welcome children and families from all backgrounds and abilities.

- All our venues are wheelchair accessible
- Children with additional support needs can attend any of our performances but some shows may be more suitable than others for those with complex needs. If you would like some advice, please contact us.
- There will be a signed performance of *I Wish I was a Mountain* (p.15) and *This Girl* (p.16), and *Super Human Heroes* (p.17) is fully captioned.

For help with accessibility, please contact Pamela Walker on **0131 225 8050** or email: pamela@imagine.org.uk

VENUE INFORMATION



- 1 Traverse Theatre**
 10 Cambridge Street,
 Edinburgh EH1 2ED
www.traverse.co.uk
- 2 The Studio**
 Potterrow, Edinburgh EH8 9BL
 (Entrance via Potterrow)
www.capitoltheatres.com
- 3 Southside Community Centre**
 117 Nicolson St, Edinburgh, EH8 9ER
www.southsidecommunitycentre.co.uk
- 4 Assembly Roxy**
 2 Roxburgh Pl, Edinburgh EH8 9SU
www.assemblyroxy.com
- 6 North Edinburgh Arts**
 15a Pennywell Court,
 Edinburgh EH4 4TZ
www.northedinburgharts.co.uk
- 7 Lyra at Artspace**
 11 Harewood Rd, Edinburgh EH16 4NT
www.lyra.co.uk
- 8 The Brunton**
 Ladywell Way, Musselburgh EH21 6AA
www.thebrunton.co.uk
- 9 Scottish Storytelling Centre**
 43–45 High Street, Edinburgh EH1 1SR
www.scottishstorytellingcentre.com
- 10 The Warehouse (subject to license)**
 Unit 7, Elizafield, Edinburgh EH6 5PY
- 11 National Museum of Scotland**
 Chambers Street, Edinburgh, EH1 1JF
www.nms.ac.uk

Save The Date:
19–30 June 2019

#edfilmfest
edfilmfest.org.uk



E D
F I L M
F E S T

SCREEN SCOTLAND
SGRIN ALBA



• EDINBURGH •
THE CITY OF EDINBURGH COUNCIL

Scotland
The Perfect Stage

CALLING ALL ADVENTURERS! EDINBURGH SCIENCE FESTIVAL

6-21 APRIL 2019



JOIN US AT THE FRONTIER

Unleash your inner scientist this Easter holidays with activities, workshops and shows for all ages!



FAMILY FUN

Explore five-floors of sensational science at City Art Centre!

Test the goiness of your slime in *Splat-tastic*, discover the wonderful life of bees in *Little Giants* and join an out-of-this-world adventure in *Mars Master Constructors*!



BOOKING HOTLINE: 0131 226 0005 BOOK ONLINE: sciencefestival.co.uk

#EdSciFest

FESTIVAL PROGRAMME COMPANY CREDITS

Three Legs: Supported by the Municipality of Roskilde.

Valentina's Galaxy: Supported by Imagine, the Edinburgh International Science Festival and the Scottish Government's Festivals Expo Fund.

Nero: Supported by Kunststiftung NRW, Fonds Darstellende Künste e.V. and RheinEnergieStiftung Kultur.

The Little Bath: Supported by Théâtre Nouvelle génération CDN – Lyon, Théâtre Paris Villette – Paris, Graines de spectacles – Clermont Ferrand, CDN de Montluçon, La Cour des Trois Coquins – Clermont-Ferrand. Le Théâtre de Romette is supported by the French Ministry of Culture, by the state Auvergne-Rhône-Alpes and by the city of Clermont-Ferrand.

Mappamondo: Supported by AFK, FPK Performing Arts Fund NL, VSB Fonds.

And If I Were Me: Supported by La Région Alsace et les Régions du Grand Est, Le Conseil Départemental du Haut Rhin, La Ville de Mulhouse, La DRAC Alsace, L'ADAMI, L'ambassade de France en Suisse, Le Réseau Quint'Est, le Triangle – Huningue, La Castine – Reichshoffen, Les Ateliers de L'Opéra du Rhin.

The Invisible Man: Supported by Dutch Performing Arts Fund NL.

Small Wonders: Commissioned by Punchdrunk, LIFT and Bernie Grant Arts Centre. Supported by Garfield Weston Foundation, the Ellis Campbell Foundation and the Small Wonders Giving Circle. Made in Tottenham with the support of Haringey Council.

I Wish I Was A Mountain: Supported by an Imagine and Brighton Dome commission, supported using public funding by Arts Council England.

New Owner: Supported by Australia Council for The Arts.

Super Human Heroes: Supported by Imagine and funded through the Scottish Government's Festivals Expo Fund.

This Girl Laughs, This Girl Cries, This Girl Does Nothing: Supported by Imagine, Creative Scotland and the Scottish Government's Festivals Expo Fund.

Emil and the Detectives: Supported by Arts South Australia.

Playful Tiger: Supported by Creative Scotland and Paul Hamlyn Foundation.

THANK YOU TO OUR SPONSORS AND SUPPORTERS:



Investment managers

John Watson's
Trust



www.eis.org.uk/arts
Support for Arts

The Gordon Fraser
Charitable Trust



Cruden
Foundation

Nancie Massey
Charitable Trust



The Artemis
Charitable
Foundation

WALTER SCOTT
SINCE · 1983

The Hugh Fraser
Foundation

DANISH ARTS FOUNDATION

FONDS
PODIUM
KUNSTEN
PERFORMING
ARTS FUND NL



David Solomons
Charitable Trust

THANKS:



EDINBURGH
INTERNATIONAL
FESTIVAL

FESTIVAL DIARY

Pre-Festival 14–24 May

Small Wonders (5–11yrs)	Starts	Ends	Venue
Tue 14 May	09.45	10.45	The Warehouse
Tue 14 May	11.30	12.30	The Warehouse
Tue 14 May	13.45	14.45	The Warehouse
Tue 14 May	16.30	17.30	The Warehouse
Wed 15 May	09.45	10.45	The Warehouse
Wed 15 May	11.30	12.30	The Warehouse
Wed 15 May	13.45	14.45	The Warehouse
Wed 15 May	19.00	20.00	The Warehouse
Thu 16 May	09.45	10.45	The Warehouse
Thu 16 May	11.30	12.30	The Warehouse
Thu 16 May	13.45	14.45	The Warehouse
Thu 16 May	16.30	17.30	The Warehouse
Fri 17 May	09.45	10.45	The Warehouse
Fri 17 May	11.30	12.30	The Warehouse
Fri 17 May	13.45	14.45	The Warehouse
Fri 17 May	19.00	20.00	The Warehouse
Sat 18 May	11.30	12.30	The Warehouse
Sat 18 May	13.00	14.00	The Warehouse
Sat 18 May	15.30	16.30	The Warehouse
Sat 18 May	17.00	18.00	The Warehouse

Small Wonders (5–11yrs)	Starts	Ends	Venue
Sat 18 May	19.00	20.00	The Warehouse
Sun 19 May	11.00	12.00	The Warehouse
Sun 19 May	13.00	14.00	The Warehouse
Sun 19 May	15.30	16.30	The Warehouse
Tue 21 May	09.45	10.45	The Warehouse
Tue 21 May	11.30	12.30	The Warehouse
Tue 21 May	13.45	14.45	The Warehouse
Tue 21 May	16.30	17.30	The Warehouse
Wed 22 May	09.45	10.45	The Warehouse
Wed 22 May	11.30	12.30	The Warehouse
Wed 22 May	13.45	14.45	The Warehouse
Wed 22 May	19.00	20.00	The Warehouse
Thu 23 May	09.45	10.45	The Warehouse
Thu 23 May	11.30	12.30	The Warehouse
Thu 23 May**	13.30	14.45	The Warehouse
Thu 23 May	16.30	17.30	The Warehouse
Fri 24 May	09.45	10.45	The Warehouse
Fri 24 May	11.30	12.30	The Warehouse
Fri 24 May	13.45	14.45	The Warehouse
Fri 24 May	19.00	20.00	The Warehouse

Saturday 25 May	Age	Starts	Ends	Venue
Valentina's Galaxy	2–5 yrs	11.30	12.15	Assembly Roxy
Small Wonders	5–11 yrs	11.30	12.30	The Warehouse
Small Wonders	5–11 yrs	13.00	14.00	The Warehouse
Valentina's Galaxy	2–5 yrs	14.00	14.45	Assembly Roxy
Small Wonders	5–11 yrs	15.30	16.30	The Warehouse
Small Wonders	5–11 yrs	17.00	18.00	The Warehouse
Small Wonders	5–11 yrs	19.00	20.00	The Warehouse

Sunday 26 May	Age	Starts	Ends	Venue
Small Wonders	5–11 yrs	11.00	12.00	The Warehouse
Small Wonders	5–11 yrs	13.00	14.00	The Warehouse
Small Wonders	5–11 yrs	15.30	16.30	The Warehouse

Monday 27 May	Age	Starts	Ends	Venue
Nero	2–5 yrs	09.45	10.20	North Edinburgh Arts
Playful Tiger	2–6 yrs	09.45	10.30	Lyra at Artspace
And If I Were Me *	5–9 yrs	10.30	11.10	The Studio
Mappamondo	2–6 yrs	10.30	11.15	Southside Community Centre
Playful Tiger	2–6 yrs	11.30	12.15	Lyra at Artspace
Nero	2–5 yrs	11.45	12.20	North Edinburgh Arts
Mappamondo	2–6 yrs	13.15	14.00	Southside Community Centre
And If I Were Me	5–9 yrs	13.30	14.10	The Studio
Emil & The Detectives	8–13 yrs	13.30	14.40	Traverse Theatre
Playful Tiger	2–6 yrs	13.30	14.15	Lyra at Artspace
Nero	2–5 yrs	13.45	14.20	North Edinburgh Arts
Emil & The Detectives	8–13 yrs	19.15	20.25	Traverse Theatre
Super Human Heroes	8–13 yrs	19.30	20.20	Traverse Theatre

Tuesday 28 May	Age	Starts	Ends	Venue
Nero	2–5 yrs	09.45	10.20	North Edinburgh Arts
Small Wonders	5–11 yrs	09.45	10.45	The Warehouse
Playful Tiger	2–6 yrs	09.45	10.30	Lyra at Artspace
Valentina's Galaxy	2–5 yrs	10.00	10.45	Assembly Roxy
Emil & The Detectives *	8–13 yrs	10.00	11.10	Traverse Theatre
I Wish I Was A Mountain *	7–12 yrs	10.15	11.00	Scottish Storytelling Centre
Mappamondo	2–6 yrs	10.30	11.15	Southside Community Centre
And If I Were Me *	5–9 yrs	10.30	11.10	The Studio
This Girl Laughs...	7–12 yrs	10.30	11.40	Brunton Theatre
Super Human Heroes	8–13 yrs	10.30	11.20	Traverse Theatre
Small Wonders	5–11 yrs	11.30	12.30	The Warehouse
Playful Tiger	2–6 yrs	11.30	12.15	Lyra at Artspace
Nero	2–5 yrs	11.45	12.20	North Edinburgh Arts
Mappamondo	2–6 yrs	13.15	14.00	Southside Community Centre
I Wish I Was A Mountain	7–12 yrs	13.15	14.00	Scottish Storytelling Centre
Emil & The Detectives	8–13 yrs	13.15	14.25	Traverse Theatre
Playful Tiger	2–6 yrs	13.30	14.15	Lyra at Artspace
Valentina's Galaxy	2–5 yrs	13.30	14.15	Assembly Roxy
And If I Were Me	5–9 yrs	13.30	14.10	The Studio
This Girl Laughs...	7–12 yrs	13.30	14.40	Brunton Theatre
Nero	2–5 yrs	13.45	14.20	North Edinburgh Arts
Small Wonders	5–11 yrs	13.45	14.45	The Warehouse
Super Human Heroes	8–13 yrs	13.45	14.35	Traverse Theatre
Small Wonders	5–11 yrs	16.30	17.30	The Warehouse

Wednesday 29 May	Age	Starts	Ends	Venue
Nero	2–5 yrs	09.45	10.20	North Edinburgh Arts
Small Wonders	5–11 yrs	09.45	10.45	The Warehouse
Valentina's Galaxy	2–5 yrs	10.00	10.45	Assembly Roxy
Emil & The Detectives *	8–13 yrs	10.00	11.10	Traverse Theatre

Wednesday 29 May (continued)	Age	Starts	Ends	Venue
Mappamondo	2-6 yrs	10.30	11.15	Southside Community Centre
This Girl Laughs... *	7-12 yrs	10.30	11.40	Brunton Theatre
Super Human Heroes *	8-13 yrs	10.30	11.20	Traverse Theatre
Small Wonders	5-11 yrs	11.30	12.30	The Warehouse
Nero	2-5 yrs	11.45	12.20	North Edinburgh Arts
Mappamondo	2-6 yrs	13.15	14.00	Southside Community Centre
I Wish I Was A Mountain	7-12 yrs	13.15	14.00	Scottish Storytelling Centre
Emil & The Detectives	8-13 yrs	13.15	14.25	Traverse Theatre
Valentina's Galaxy	2-5 yrs	13.30	14.15	Assembly Roxy
This Girl Laughs...	7-12 yrs	13.30	14.40	Brunton Theatre
Playful Tiger	2-6 yrs	13.30	14.15	Lyra at Artspace
Small Wonders	5-11 yrs	13.45	14.45	The Warehouse
Super Human Heroes	8-13 yrs	13.45	14.35	Traverse Theatre
Small Wonders	5-11 yrs	19.00	20.00	The Warehouse
I Wish I Was A Mountain ***	7-12 yrs	19.15	20.00	Scottish Storytelling Centre
Us/Them	10-15 yrs	19.15	20.15	The Studio
Thursday 30 May				
Small Wonders	5-11 yrs	09.45	10.45	The Warehouse
Valentina's Galaxy **	2-5 yrs	10.00	10.45	Assembly Roxy
I Wish I Was A Mountain *	7-12 yrs	10.15	11.00	Scottish Storytelling Centre
This Girl Laughs... *	7-12 yrs	10.30	11.40	Brunton Theatre
Super Human Heroes *	8-13 yrs	10.30	11.20	Traverse Theatre
Us/Them *	10-15 yrs	10.30	11.30	The Studio
Small Wonders	5-11 yrs	11.30	12.30	The Warehouse
I Wish I Was A Mountain	7-12 yrs	13.15	14.00	Scottish Storytelling Centre
Three Legs	1.5-5 yrs	13.30	14.15	Southside Community Centre
Valentina's Galaxy	2-5 yrs	13.30	14.15	Assembly Roxy
New Owner	7-12 yrs	13.30	14.20	North Edinburgh Arts
This Girl Laughs...	7-12 yrs	13.30	14.40	Brunton Theatre
Us/Them	10-15 yrs	13.30	14.30	The Studio
Small Wonders	5-11 yrs	13.45	14.45	The Warehouse
Super Human Heroes	8-13 yrs	13.45	14.35	Traverse Theatre
Small Wonders	5-11 yrs	16.30	17.30	The Warehouse
The Invisible Man	5-11 yrs	19.00	20.00	Traverse Theatre
New Owner	7-12 yrs	19.00	19.50	North Edinburgh Arts
Friday 31 May				
Small Wonders	5-11 yrs	09.45	10.45	The Warehouse
Valentina's Galaxy	2-5 yrs	10.00	10.45	Assembly Roxy
The Invisible Man *	5-11 yrs	10.00	11.00	Traverse Theatre
Three Legs	1.5-5 yrs	10.30	11.15	Southside Community Centre
New Owner *	7-12 yrs	10.30	11.20	North Edinburgh Arts
This Girl Laughs... *	7-12 yrs	10.30	11.40	Brunton Theatre
Super Human Heroes *	8-13 yrs	10.30	11.20	Traverse Theatre
Us/Them *	10-15 yrs	10.30	11.30	The Studio
Small Wonders	5-11 yrs	11.30	12.30	The Warehouse
Valentina's Galaxy	2-5 yrs	11.30	12.15	Assembly Roxy
Three Legs	1.5-5 yrs	13.30	14.15	Southside Community Centre
The Invisible Man	5-11 yrs	13.30	14.30	Traverse Theatre
New Owner	7-12 yrs	13.30	14.20	North Edinburgh Arts
Small Wonders	5-11 yrs	13.45	14.45	The Warehouse
Small Wonders	5-11 yrs	19.00	20.00	The Warehouse
This Girl Laughs...	7-12 yrs	19.00	20.10	Brunton Theatre
Saturday 1 June				
The Little Bath	2-6 yrs	11.00	11.30	The Studio
New Owner	7-12 yrs	11.00	11.50	North Edinburgh Arts
Three Legs	1.5-5 yrs	11.30	12.15	Southside Community Centre
Valentina's Galaxy	2-5 yrs	11.30	12.15	Assembly Roxy
Small Wonders	5-11 yrs	11.30	12.30	The Warehouse
Small Wonders	5-11 yrs	13.00	14.00	The Warehouse
The Little Bath	2-6 yrs	13.30	14.00	The Studio
Three Legs	1.5-5 yrs	14.00	14.45	Southside Community Centre
Valentina's Galaxy	2-5 yrs	14.00	14.45	Assembly Roxy
This Girl Laughs... ***	7-12 yrs	14.00	15.10	Brunton Theatre
Super Human Heroes	8-13 yrs	14.00	14.50	Traverse Theatre
New Owner	7-12 yrs	14.30	15.20	North Edinburgh Arts
The Invisible Man	5-11 yrs	15.00	16.00	Traverse Theatre
The Little Bath	2-6 yrs	15.30	16.00	The Studio
Small Wonders	5-11 yrs	15.30	16.30	The Warehouse
Small Wonders	5-11 yrs	17.00	18.00	The Warehouse
Small Wonders	5-11 yrs	19.00	20.00	The Warehouse
The Invisible Man	5-11 yrs	19.00	20.00	Traverse Theatre
Super Human Heroes	8-13 yrs	19.15	20.05	Traverse Theatre
Sunday 2 June				
The Little Bath	2-6 yrs	10.30	11.00	The Studio
Small Wonders	5-11 yrs	11.00	12.00	The Warehouse
Three Legs	1.5-5 yrs	11.30	12.15	Southside Community Centre
The Invisible Man	5-11 yrs	11.30	12.30	Traverse Theatre
The Little Bath	2-6 yrs	12.30	13.00	The Studio
Small Wonders	5-11 yrs	13.00	14.00	The Warehouse
The Little Bath	2-6 yrs	14.30	15.00	The Studio
The Invisible Man	5-11 yrs	15.00	16.00	Traverse Theatre
Small Wonders	5-11 yrs	15.30	16.30	The Warehouse

* Post-show Q&A sessions

** Relaxed performance

*** BSL performances

To book: www.imagine.org.uk | 0131 228 1404

Edinburgh International
**Children's
Festival**
25 MAY – 2 JUNE 2019

0131 228 1404
www.imagine.org.uk

 /ImagineUK  @imagineUK #EdChildrensFest

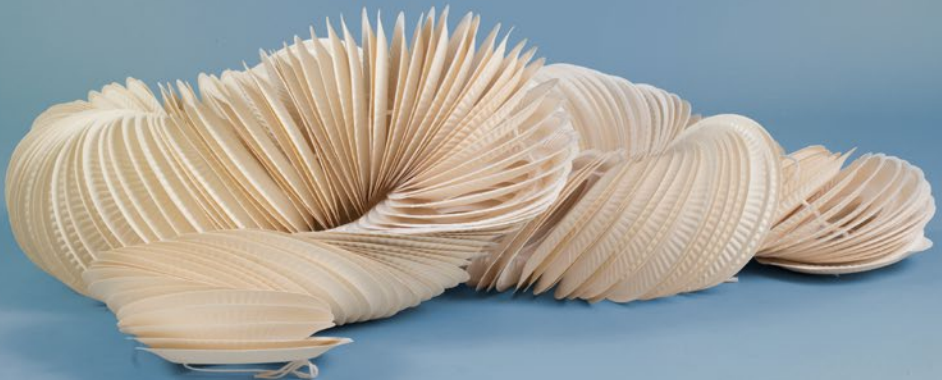


ALBA | CHRUTHACHAIL

• EDINBURGH •
THE CITY OF EDINBURGH COUNCIL



Scottish Government
Riaghaltas na h-Alba
gov.scot



Cover photo: Richard Hedger
Art direction and costume design: Alphabet Studio
Brochure design: Tom Holmes